



AFFORDABLE ENERGY SUMMIT

Wednesday, July 25, 2018



AT&T Executive Education & Conference Center
1900 University Avenue
9:00am - 4:30pm



Austin Energy Low-Income & Electric Vehicle Offerings



Expanding Access to Solar

Danielle Murray, Manager, Customer Renewable Energy Solutions



Barriers to Solar for MFAH, Renters and Low-Income Customers

- Cost & Financing
 - Significant upfront cost, long paybacks
 - Unable to access credit or take on debt
 - Unable to use federal tax credits
- Roof Age and Condition
- Rent Their Home
 - Split incentive between landlord and tenants
 - Varied metering and billing set ups
 - Move more frequently



Current Solar Programs Supporting Underserved Markets

- **Residential & Renters**

- Residential Rebate Program

- Community Solar

- La Loma Community Solar Customer Assistance Program (CAP) Discount

- **Multifamily Affordable Housing & Non-Profits**

- Multifamily Affordable Housing Shared Solar Pilot Program

- Commercial Solar Performance Based Incentive non-profit bonus



Residential Solar Rebates

- Incentives for single-family homes and multifamily properties that install solar to serve individual residential units.
- Solar 101 course and \$2,500 rebate
 - Increased focus on upfront customer education and consumer protection.
 - All residential solar customers receive the same incentive amount, regardless of home size, improving equity.



Community Solar

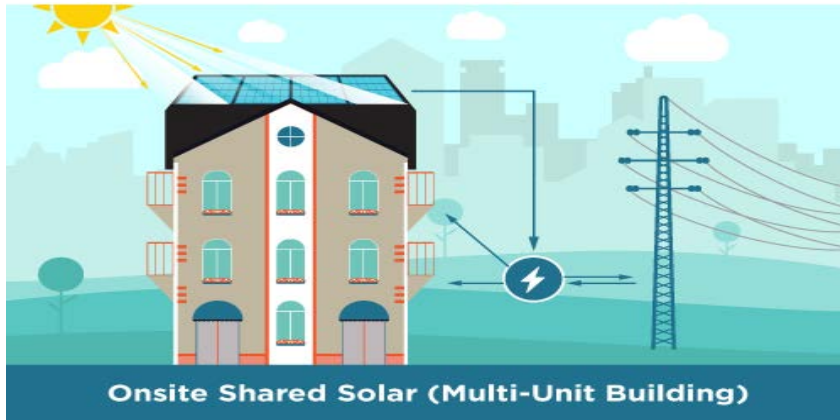
- Allows renters and others to access local solar without installing on their own roof
 - No up front cost, no contract, no maintenance, moves with you
- Community Solar Projects:
 - 185 kW Palmer Events Center rooftop solar (2016)
 - 2.6 MW La Loma solar farm (2018)
- Residential opt-in program, premium price
 - 1.3¢/kWh more than regular power supply
 - Rate is locked in for 15 years
- La Loma Community Solar CAP Discount
 - Half the capacity of La Loma is reserved for CAP customers (~220)
 - 1.5¢/kWh discount from Community Solar rate makes the program less expensive than regular power from day one



Shared Solar for Multifamily Affordable Housing

- What is Shared Solar?

- Generation from single solar installation on a multifamily building is virtually allocated across individually metered tenants' bills.



- Benefits

- Enables multifamily tenants to access solar and reduce electric bills
- Reduces installed cost and complexity
- Enables a variety of ownership and financing models

- Shared Solar & Pilot Incentive for Multifamily Affordable Housing

- 3 pilot sites selected, serving 199 households all below 60% MFI
- Pilot Incentive: \$1/Watt with \$0.8/Watt adder for net-zero energy capable, max \$200,000
- Expect to expand offering to other participants in FY19, incentive level tbd



Solar Incentives for Non-Profits



- Commercial solar customers can apply for Performance Based Incentives (PBIs) from Austin Energy
- Incentives are paid for actual system production for 10 years, in addition to Value of Solar bill credits.
- Incentive level depends on size of system & incentive level at time of application.
- Non-profits are eligible for **higher incentives** for larger systems, and **exempted from customer cap**
 - Non-profit solar projects ≤ 400 kW qualify for highest incentive tier, with no cap on customer capacity.
- 26 non-profits, schools, government, and multifamily affordable housing providers currently receiving PBIs



Sample Commercial Solar Bill



ELECTRIC SERVICE

Meter

Read Date	05/17/2018	06/19/2018	Read Diff.
Delivered Read	709	851	142
Received Read	0	0	0
Net Read	709	851	142
Meter Multiplier			1000
Demand Usage			320.00
Power Factor			0.97

Meter

Read Date	05/17/2018	06/19/2018	Generation
Solar PV Read	888	1273	385
Meter Multiplier			100

Total Service Consumption in kWh	180500
Total Generation in kWh	38500

City of Austin Electric - Secondary Voltage >10kW <300kW

Customer Charge	\$27.50
Electric Delivery 320.00 kW at \$4.50 per kW	\$1,440.00
Demand Charge 320.00 kW at \$4.19 per kW	\$1,340.80
Energy Charge 180,500 kWh at \$0.02421 per kWh	\$4,369.91
Community Benefit Charges	\$819.48
Regulatory Charges 320.00 kW at \$3.80 per kW	\$1,216.00
Power Supply Adjustment, Summer 180,500 kWh at \$0.03007 per kWh	\$5,427.64
Solar PBI 38,500 PV kWh at \$-0.06 per kWh	-\$2,310.00
Value of Solar 38,500 PV kWh at \$-0.067 per kWh	-\$2,579.50
Total Current Charges	\$9,751.83
Commercial Sales Tax	
Taxable Amount	\$9,751.83
Capital Metro Sales Tax 1%	\$97.52
City Sales Tax 1%	\$97.52
State Sales Tax 6.25%	\$609.49
TOTAL CURRENT CHARGES	\$10,556.36



Austin Non-Profits with Solar

- Austin Children's Shelter
- Blackland CDC
- Family Eldercare
- Foundation Communities
- Goodwill of Central Texas
- Guadalupe Neighborhood Development Corp
- Habitat for Humanity
- Housing Authority of City of Austin
- Lifeworks
- Mary Lee Foundation
- Mobile Loaves & Fishes
- PF Affordable Housing
- Settlement Homes for Children
- SS Affordable Housing



- St. George's Court Senior Housing
- Youth and Family Alliance

...and more!

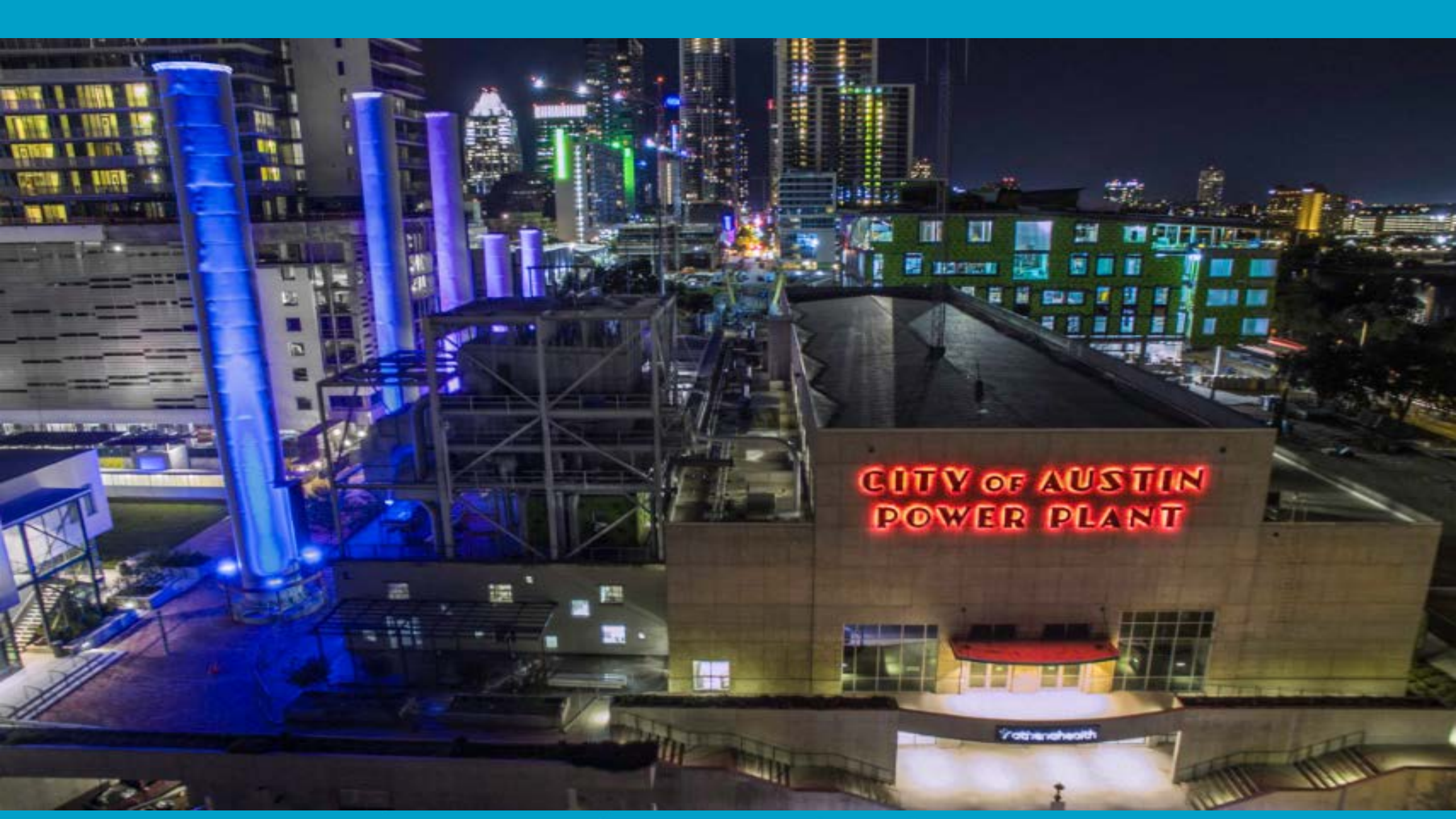


Electric Vehicles are for Everyone

Amy Atchley

Electric Vehicles and Emerging Technologies





CITY OF AUSTIN
POWER PLANT

youthcarehealth

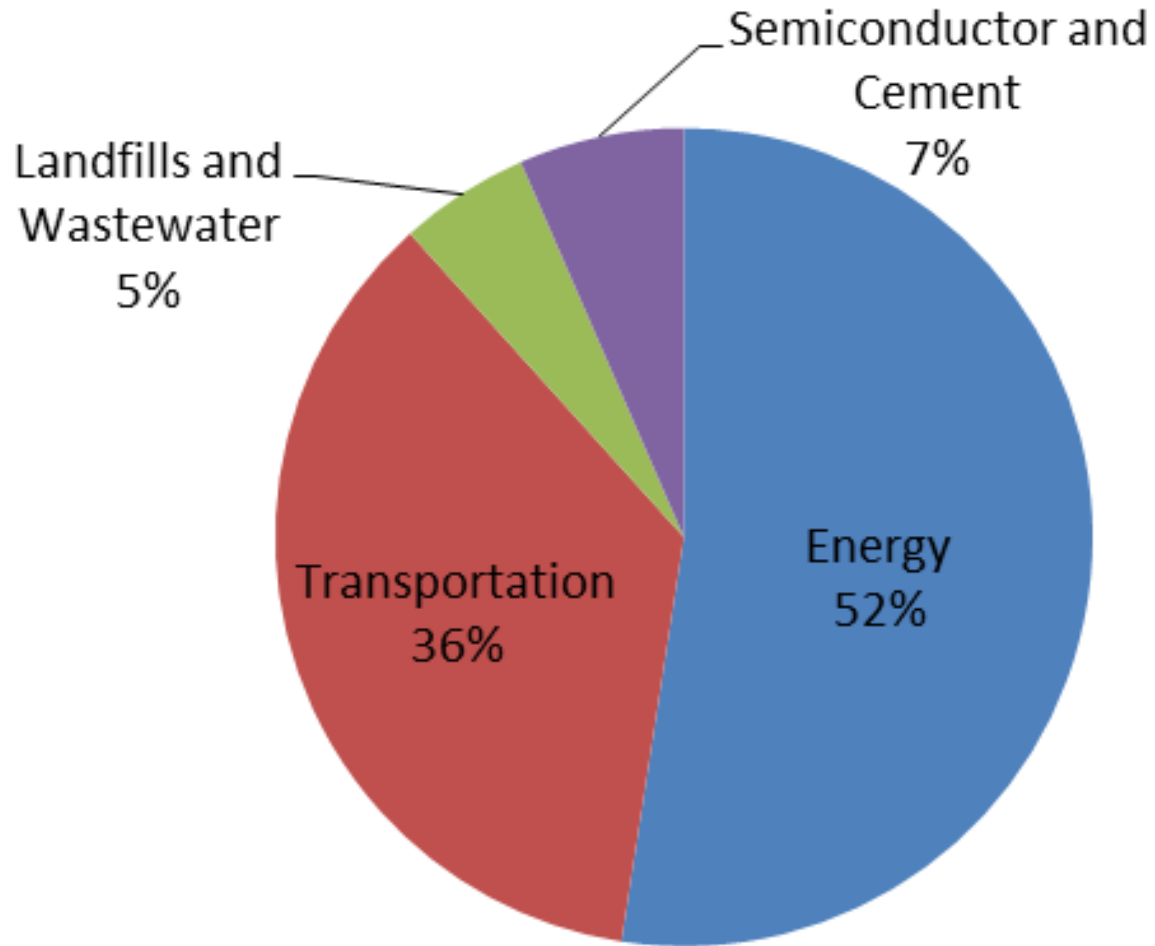
Austin Energy's EV Program

Austin Energy launched its Electric Vehicles and Emerging Technologies team in 2011 to:

- Promote the City's climate protection & clean air goals
- Pioneer innovative technologies
- Remove barriers and maximize customer value for EV adoption



Travis County Greenhouse Gas Inventory



Focus on Energy and Transportation to successfully get a community to Net-Zero



City EV Fleet Adoption Resolution

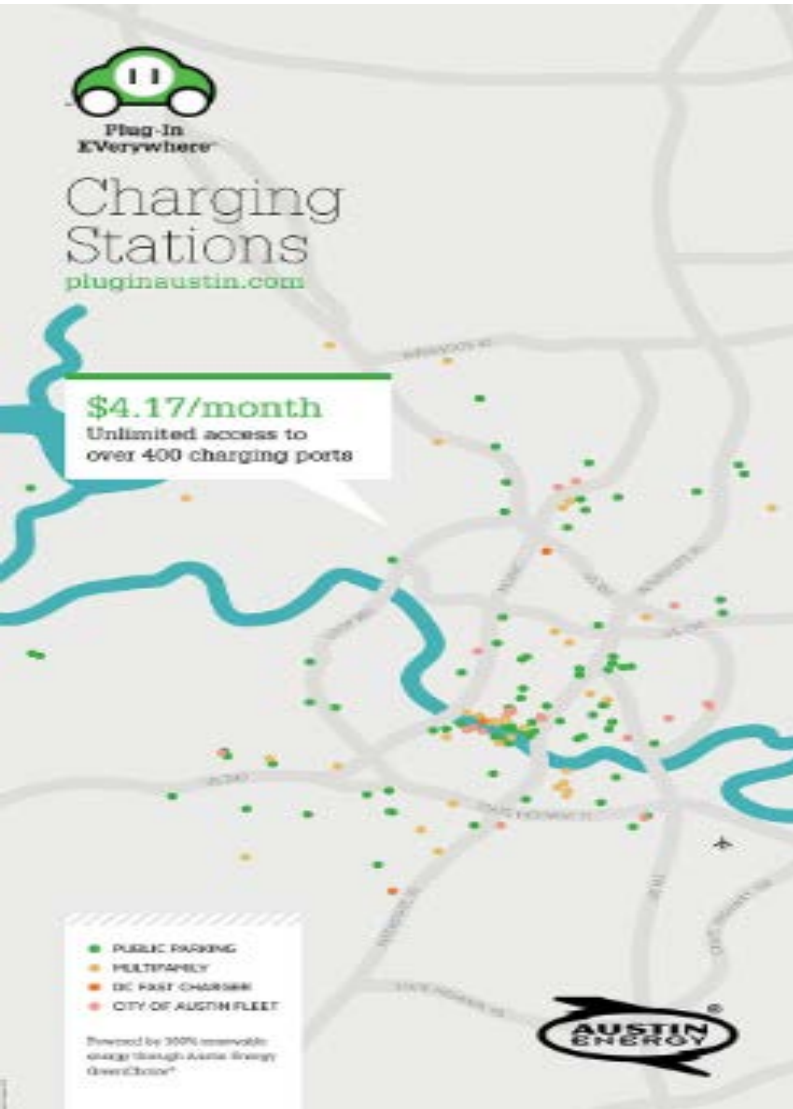
GOAL:

330 Plug-In Hybrid and Battery Electric vehicles charged at City facilities over the next three years

These vehicles will displace
15,000 metric tons of CO₂e &
save the city and its citizens
\$3.5M



Convenient, Affordable & Clean



Low-Income & Multifamily Programs

“EVs are for Everyone”

- Electric vehicle outreach, program development and deployment for all Austinites
- Funding provided to Austin Energy by



Community Engagement



Human-Centered Designed Programs

Austin resident Maria M. test drove an electric bike with a cargo bucket attachment. Maria enjoyed the ride – her kids loved it! She had a light bulb moment...

“I can take my kids to school and then get to the store.” – Maria M.

September 2017 Austin Energy Community Connections



Pilot Programs in Development



EVs for Schools

Public/private partnership to install EV charging stations at public school campuses. Project's core goals are introduce kids to leading-edge concepts around EV technology while enlivening traditional STEM education and providing workplace charging for teachers and school staff.



Pilot Programs in Development



EV Multifamily Expansion

Affordable housing for potential hosts for dynamic mobility options



Pilot Programs in Development

EV Car Share Program

Rideshare employment opportunities as well as community membership-based accessibility at designated affordable housing units.



Pilot Programs in Development



E-Bike Share Program

Community ebike share station(s) for first and last mile solutions.



City of Austin - Austin Energy
Customer Energy Solutions

Danielle Murray
Manager, Customer Renewable Energy Solutions
p. 512.322.6055
e. danielle.murray@austinenergy.com

City of Austin - Austin Energy
Electric Vehicles & Emerging Technologies

Amy Atchley
p. 512.972.9571
e. amy.atchley@austinenergy.com

www.pluginAustin.com

Twitter



Facebook



Questions?

